



INHDS (Indiana Hospital Data Submission)

End User Training

Welcome!

- Agenda

- Overview of INHDS Program
 - History of IDS/State Statute
- Timeline
- End User Training
- Q&A

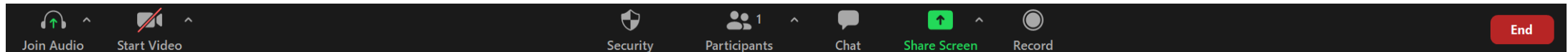


Indiana Hospital Data Submission Portal

of the Indiana Hospital Association

Webinar Logistics:

- Slide deck will be provided to all participants
- Webinar is being recorded for future distribution
- Please use chat feature if there are questions



- *Thank you for your time today!*



Overview of Program

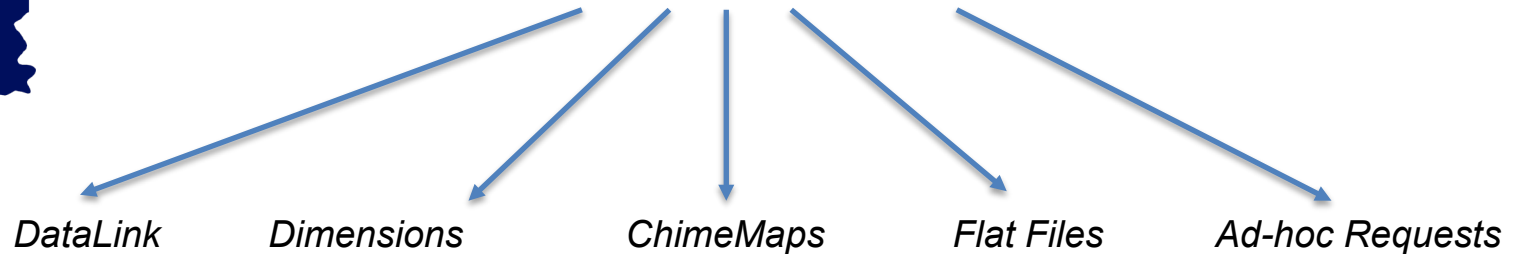
Indiana's Unique Data Opportunity

- State Statute partially drives participation, but has uniquely positioned Indiana
- Member participation: 100%
 - National Comparisons: Texas/California
- Unique opportunity: *Empower members with comprehensive data toolsets that provide great decision support metrics to enhance their decision-making.*





The Indiana Hospital Association has one of the most complete administrative claims dataset from Acute, Rehab, Long-Term, and Psychiatric Hospitals available.



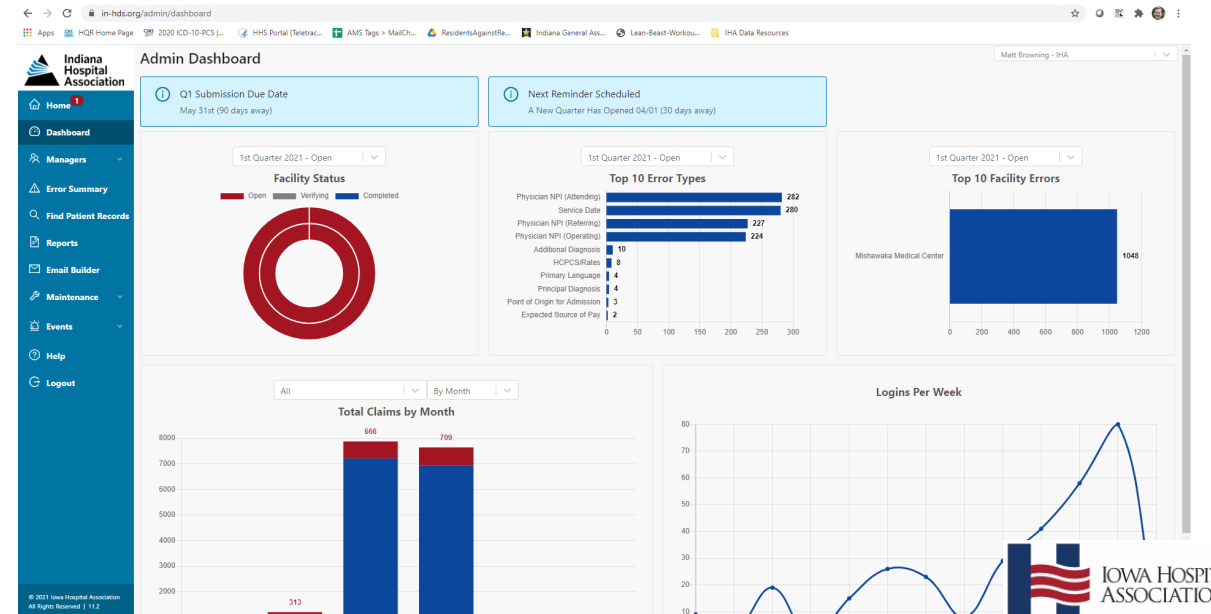


Brief Overview of INHDS Program

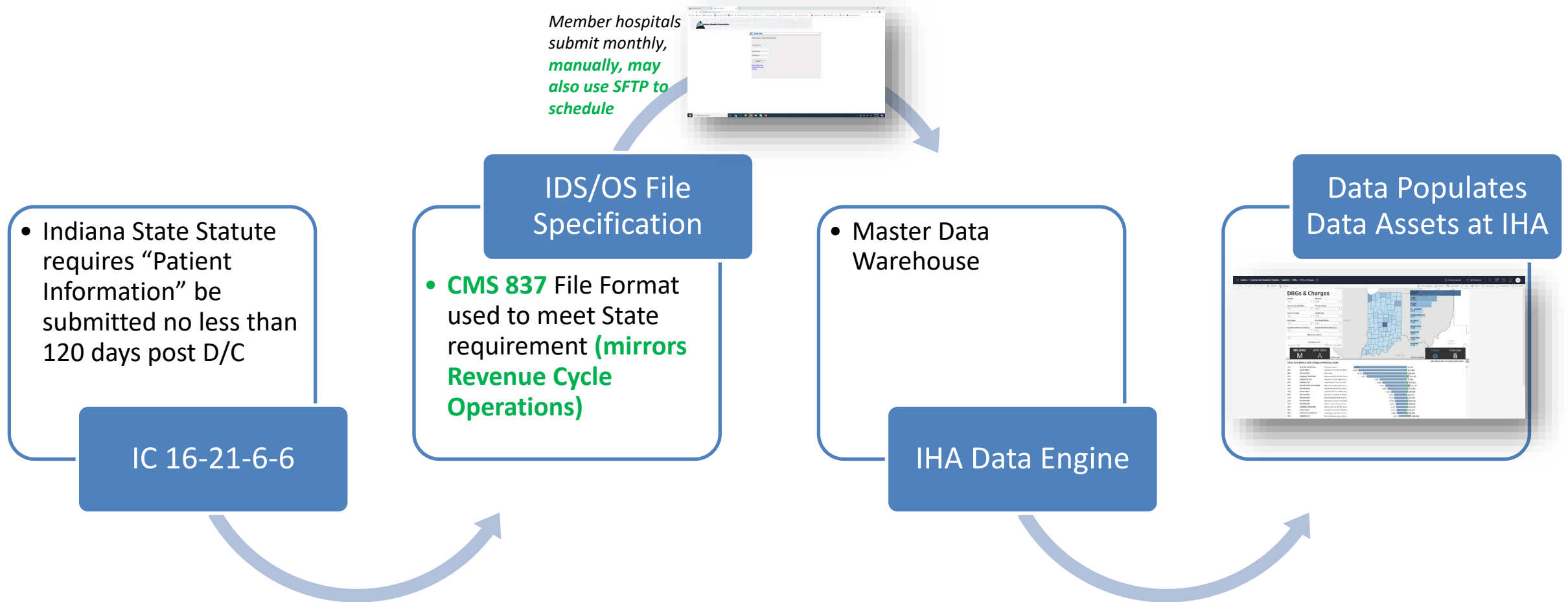
Partnership with Iowa Hospital Association



- The INHDS Portal is built on Iowa's IPOP platform, a best-in-class application.
- Iowa HA is a national leader in hospital discharge data collection, collecting/partnering for data for:
 - South Dakota, Oregon, Mississippi, Colorado, Hawaii, Idaho, Wisconsin, Vermont, Ohio, Kentucky, Washington

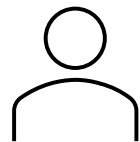


Revised IHA Discharge Study Process (INHDS)



Key Roles within INHDS

<i>Program Changes</i>	<i>End User Benefits</i>
New data verification process	<ul style="list-style-type: none">• Provides visibility into integrity/validation of hospital data that is provided to ISDH• Catches issues at time of submission, not at time of IHA data release

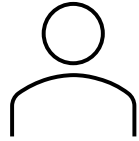


Role: Data Submitter
Responsible for monthly submissions to INHDS either via web, or SFTP



Role: Primary Contact
Responsible for review of monthly submissions for accuracy, Signs off on quarterly close for hospital

INHDS Reporting Cycle



Data Submitter uploads/SFTP batch file



Primary Contact review monthly data, works edits, validates quarterly.

Discharges	Due	Quarterly Verification Due
January	April 1 st	June 1 st Data Released into IHA BI Platforms by June 30th
February	May 1 st	
March	June 1 st	
April	July 1 st	September 1 st Data Released into IHA BI Platforms by September 30th
May	August 1 st	
June	September 1 st	
July	October 1 st	December 1 st Data Released into IHA BI Platforms by December 31st
August	November 1 st	
September	December 1 st	
October	January 1 st	March 1 st Data Released into IHA BI Platforms by March 31st
November	February 1 st	
December	March 1 st	

INHDS Project Timeline

Calendar Month	Discharges Due	IDS	INHDS
October, 2020	July, 2020	Mandatory	<i>New File Specification released</i>
November, 2020	August, 2020	Mandatory	<i>New Portal Released</i>
December, 2020	September, 2020	Mandatory	Voluntary
January, 2021	October, 2020	Mandatory	Voluntary
February, 2021	November, 2020	Mandatory	Voluntary – 75%
March, 2021	December, 2020	Mandatory	Voluntary – 100%
April, 2021	January, 2021	Retired	Mandatory

Important Considerations

- INHDS is inclusive of Inpatient and All Outpatient services rendered under hospital license
 - Outpatient data is inclusive of all OP services
- Valuable resources for INHDS available at www.ihconnect.org
- INHDS will use multi-factor authentication to log-in. Be sure to be familiar with your organization's preferred approach